



Sciences Economiques et Sociales de la Santé
& Traitement de l'Information Médicale

sesstim.univ-amu.fr

Seth HOLMES

Professeur d'Anthropologie Médicale à l'Université de Berkeley, Californie.
Titulaire de la chaire Institut Paoli-Calmettes / IMERA

**Because They're Closer to the Ground:
Migrant Farmworkers, Health Care, and the Invisibilization of Inequalities**

Octobre 2020



[Cliquez ici pour voir l'intégralité des ressources associées à ce document](#)

“Because They’re Lower to the Ground”:

**Migrant Farmworkers, Health Care
and the Invisibilization of Inequalities**

Seth M. Holmes, M.D., Ph.D.

Associate Professor, Medical Anthropology, Society and Environment

Co-Director, MD/PhD Track in Medical Anthropology

Co-Chair, Berkeley Center for Social Medicine

University of California, Berkeley

Paoli Calmette Institute/IMéRA Chair

Institut Méditerranéen de Recherches Avancées

Marseille, France



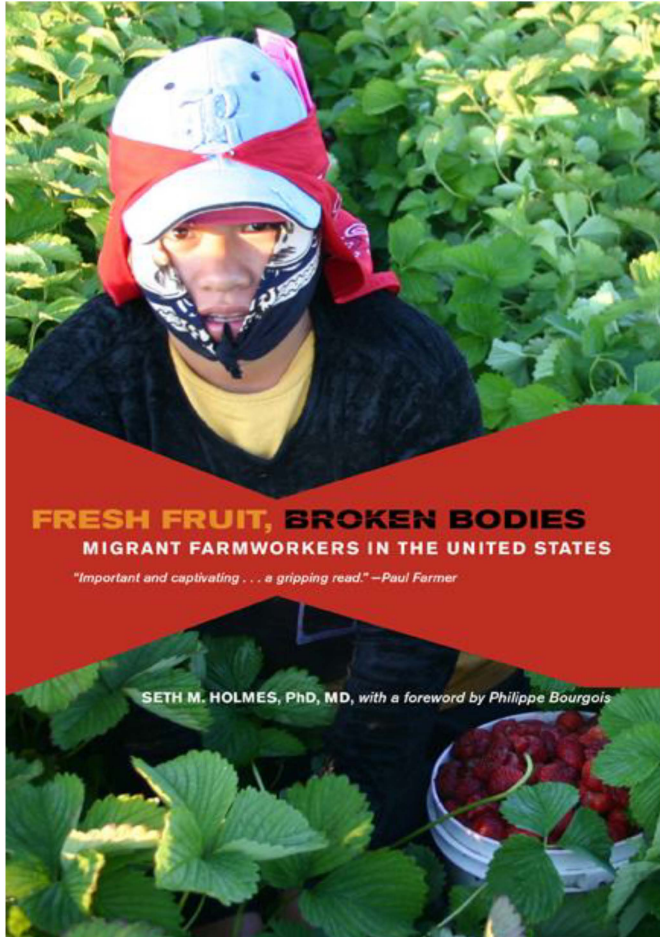
Enduring Research Interests

- Through what mechanisms do social structures lead to health disparities?
- Through what mechanisms are social and health inequalities normalized and naturalized in society and in medicine?



Methodological Approach

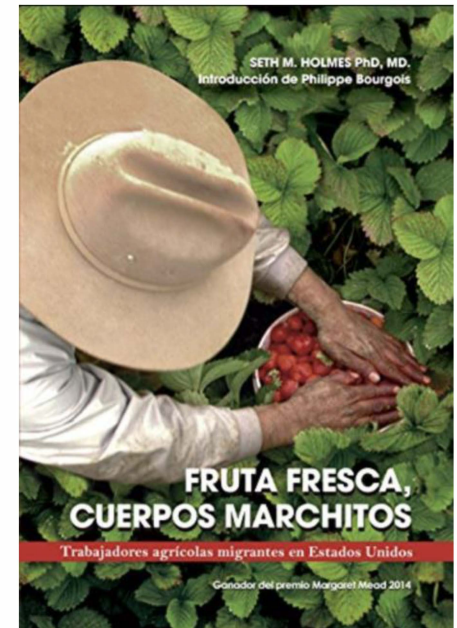
- Participant-observation / Ethnography
- Oral histories
- Interviews
- Clinical chart reviews
- Media analysis



FRESH FRUIT, BROKEN BODIES
MIGRANT FARMWORKERS IN THE UNITED STATES

"Important and captivating . . . a gripping read." —Paul Farmer

SETH M. HOLMES, PhD, MD, with a foreword by Philippe Bourgois

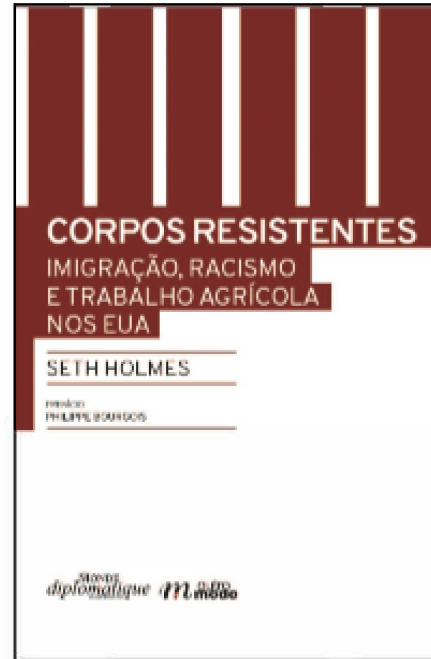


SETH M. HOLMES PhD, MD.
Introducción de Philippe Bourgois

**FRUTA FRESCA,
CUERPOS MARCHITOS**

Trabajadores agrícolas migrantes en Estados Unidos

Ganador del premio Margaret Mead 2014



CORPOS RESISTENTES

IMIGRAÇÃO, RACISMO
E TRABALHO AGRÍCOLA
NOS EUA

SETH HOLMES

PRELÓCIO
PHILIPPE BOURGOIS

SECRETARIA DE CULTURA
diplomática **777** 0000



Seth M. Holmes

**FRISCHE FRÜCHTE,
KAPUTTE KÖRPER**

Migration, Rassismus und die Landwirtschaft in den USA

[transcript] Kultur und soziale Praxis



Disparities in Latinx Migrant Health

- Immigrants in the United States
- Agricultural workers
- Migrant and seasonal farm workers
- Access to health care



Holmes *PLoS Med* 2006

Primary Study Participants

Participants	Location	Description
130 farm employees	Washington state	20 white and Asian-American U.S. citizens
		20 Latinx U.S. citizens
		20 mestizo Mexican citizens
		20 Triqui Mexican citizens
30 clinicians	WA, CA, and Oaxaca, Mexico	18 physicians
		10 nurses
		2 dentists
22 border residents	Arizona	15 border activists
		5 border patrol officers
		2 vigilante members



Primary Findings

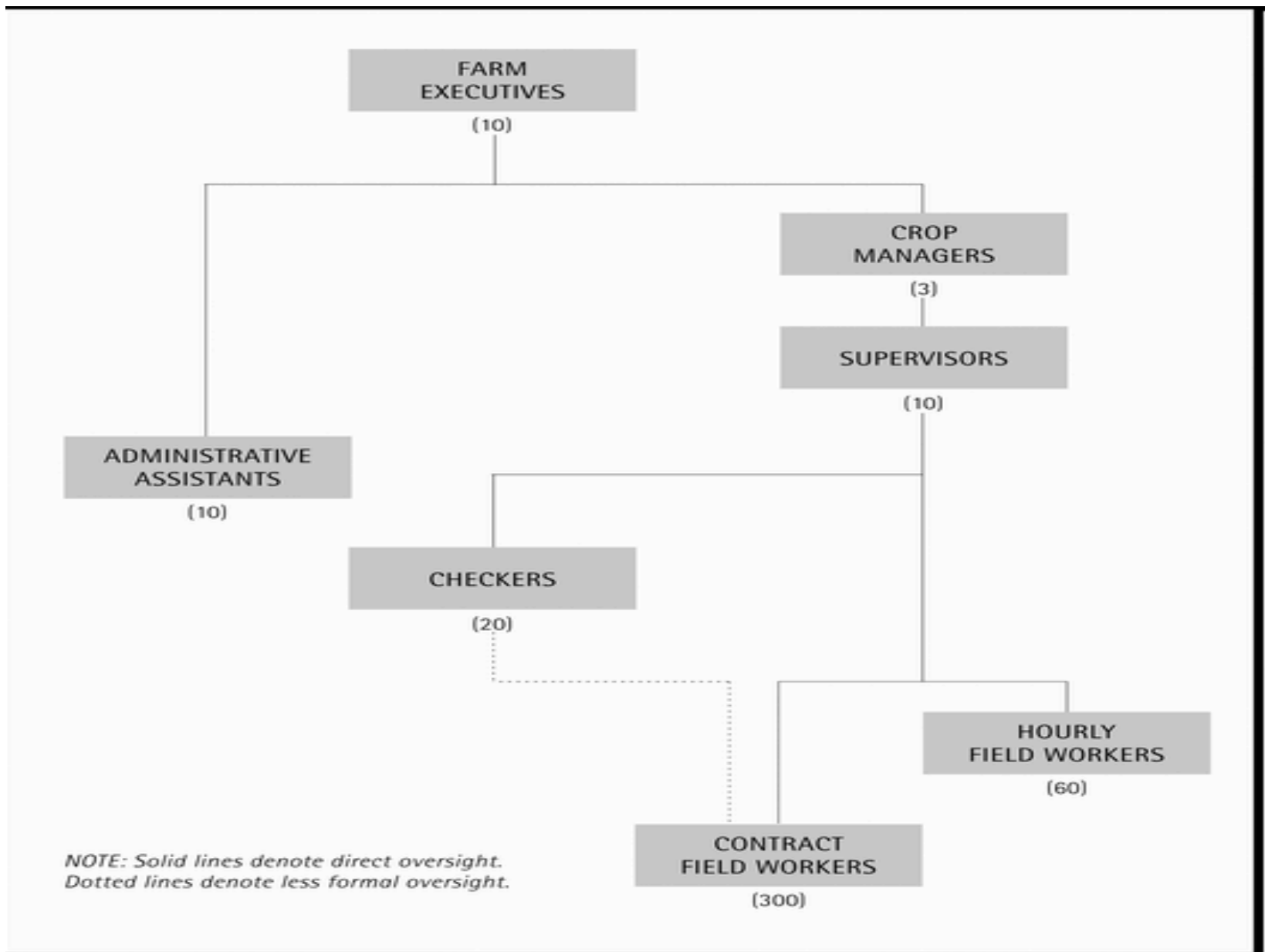
- Ethnicity-citizenship hierarchy in agriculture
- Social structure produces health disparities through living and working conditions
- There is a lack of social analysis in the practice of migrant health care that often leads to inadvertent blaming of the patient
- Social and health disparities are naturalized primarily through conceptions of race and body difference

Skagit Valley, Washington

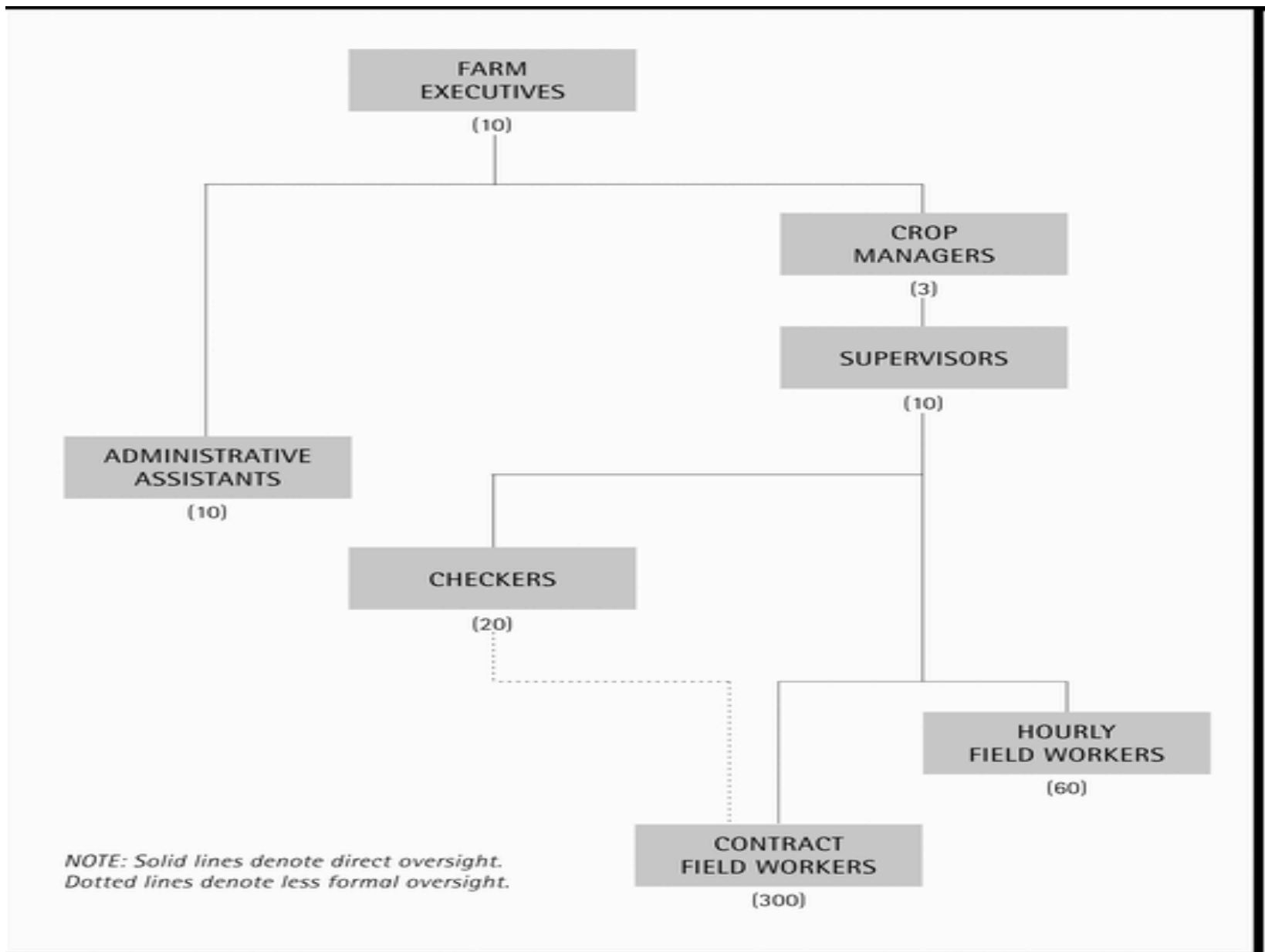


Tanaka Farm

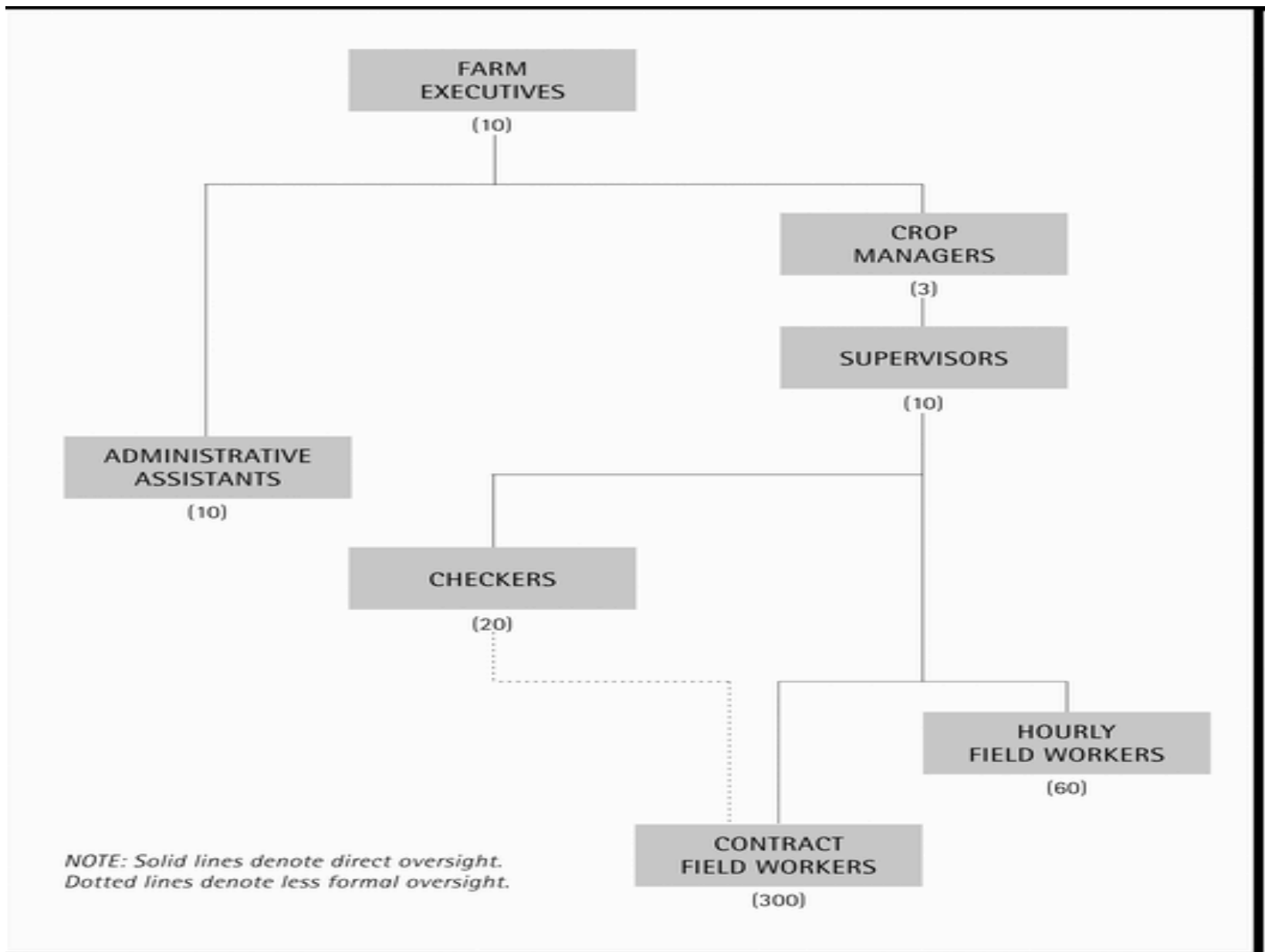






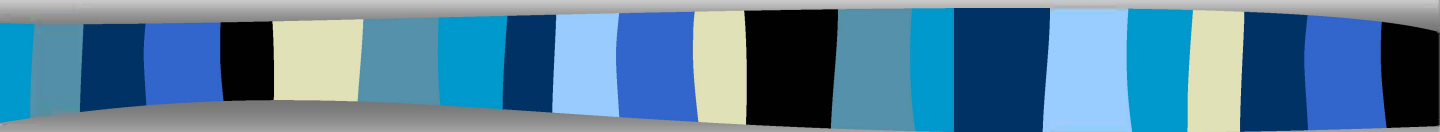




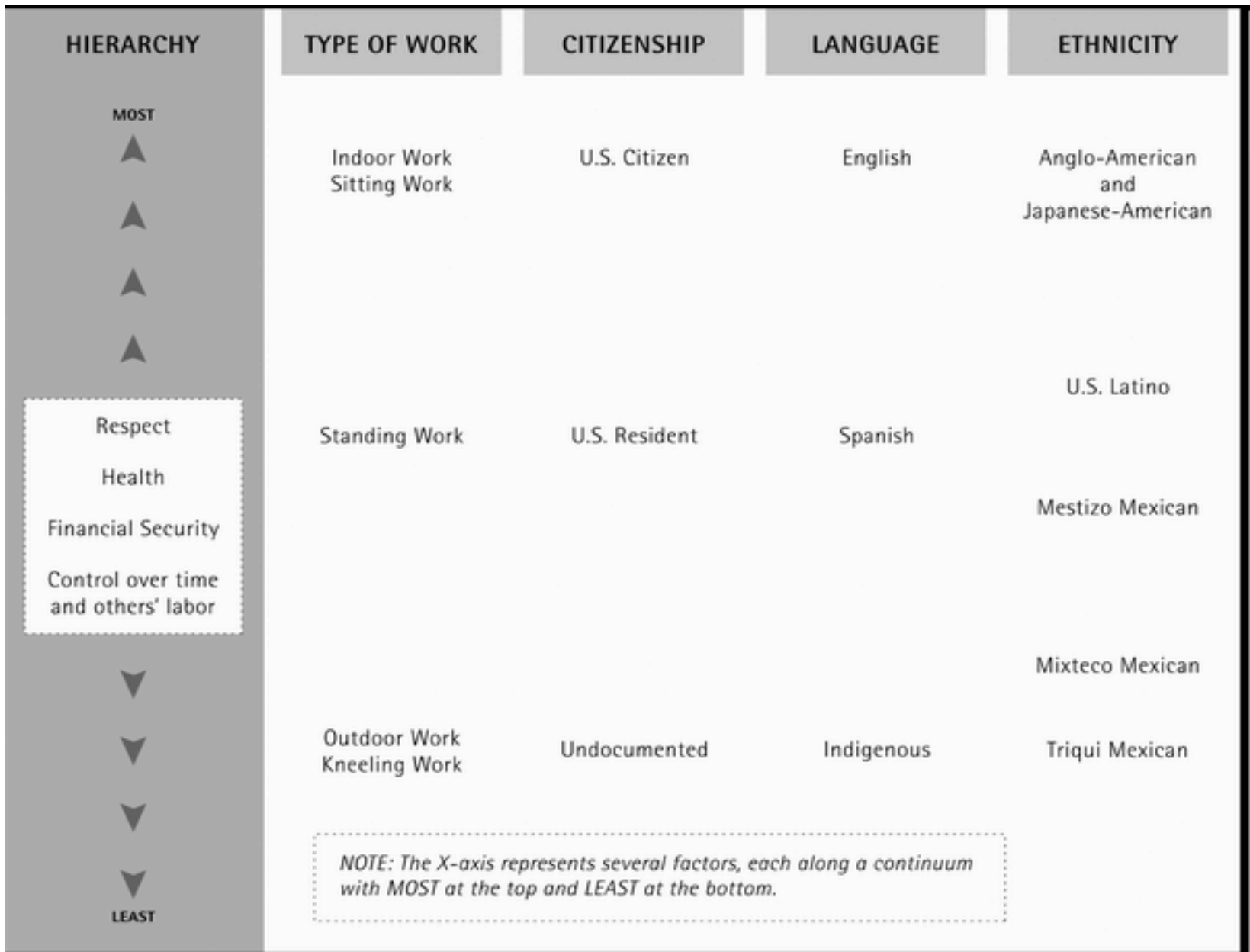












The Researcher



Social Structures and Health



Skagit Valley

BURLINGTON -- MOUNT VERNON (1936-1996)



1936



1956



1976



1996

The Practice of Migrant Health



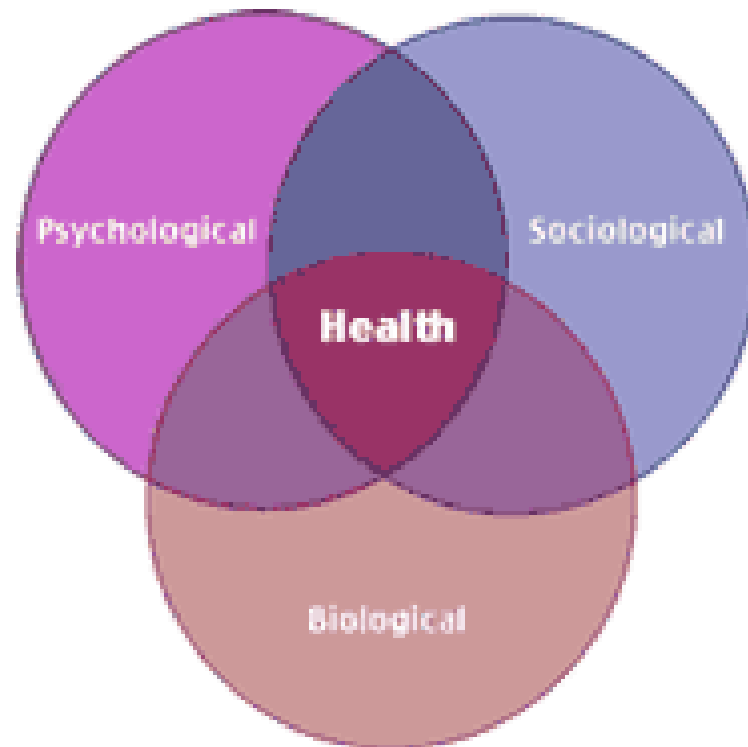
Abelino's Knee



Crescencio's Headache



The Clinical Gaze in Migrant Health



Normalization and Naturalization



Internalization







General Research Questions

- Through what mechanisms do social structures lead to health disparities?
- Through what mechanisms are social and health inequalities normalized and naturalized in society and in the health sciences?



Points of Intervention

- Micro to Macro Continuum
 - Clinics and hospitals
 - Medical and nursing education
 - Media coverage and framing
 - Local, regional, and national social and health policies
 - Global immigration and economic policies

